

The background of the slide features a large, faint, circular seal of the State of Delaware. The seal contains the text "SEAL OF THE STATE OF DELAWARE" around the top and "1704 • 1776 • 1787" around the bottom. In the center of the seal is a figure of a man in a military uniform, standing on a shield with the words "LIBERTY AND INDEPENDENCE".

DELAWARE'S RESPONSE TO COVID-19

Press Briefing
April 9, 2020

de.gov/coronavirus

Delaware Cases of COVID-19

1,116 positive cases

since first case confirmed on March 11, 2020

19 deaths

159 recoveries

177 hospitalizations

As of April 8, 2020 at 4:30 p.m.

Delaware Cases of COVID-19



**NEW
CASTLE**

636

positive cases

*since first case confirmed on
March 11, 2020*

As of April 8, 2020 at 4:30 p.m.

de.gov/coronavirus

Delaware Cases of COVID-19



201
positive cases
*since first case confirmed on
March 11, 2020*

As of April 8, 2020 at 4:30 p.m.

Delaware Cases of COVID-19

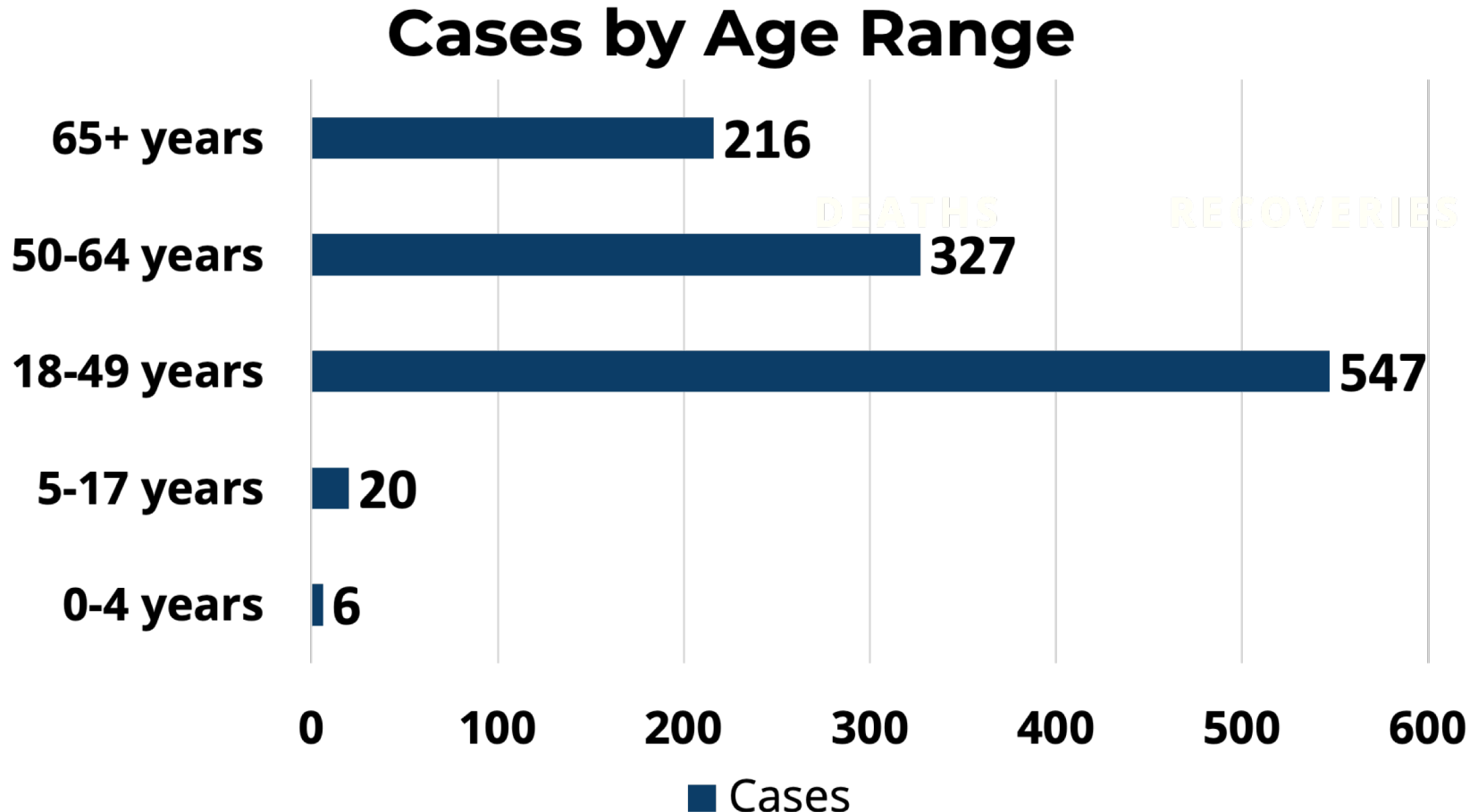


279
positive cases
*since first case confirmed on
March 11, 2020*

As of April 8, 2020 at 4:30 p.m.

de.gov/coronavirus

Delaware Cases of COVID-19

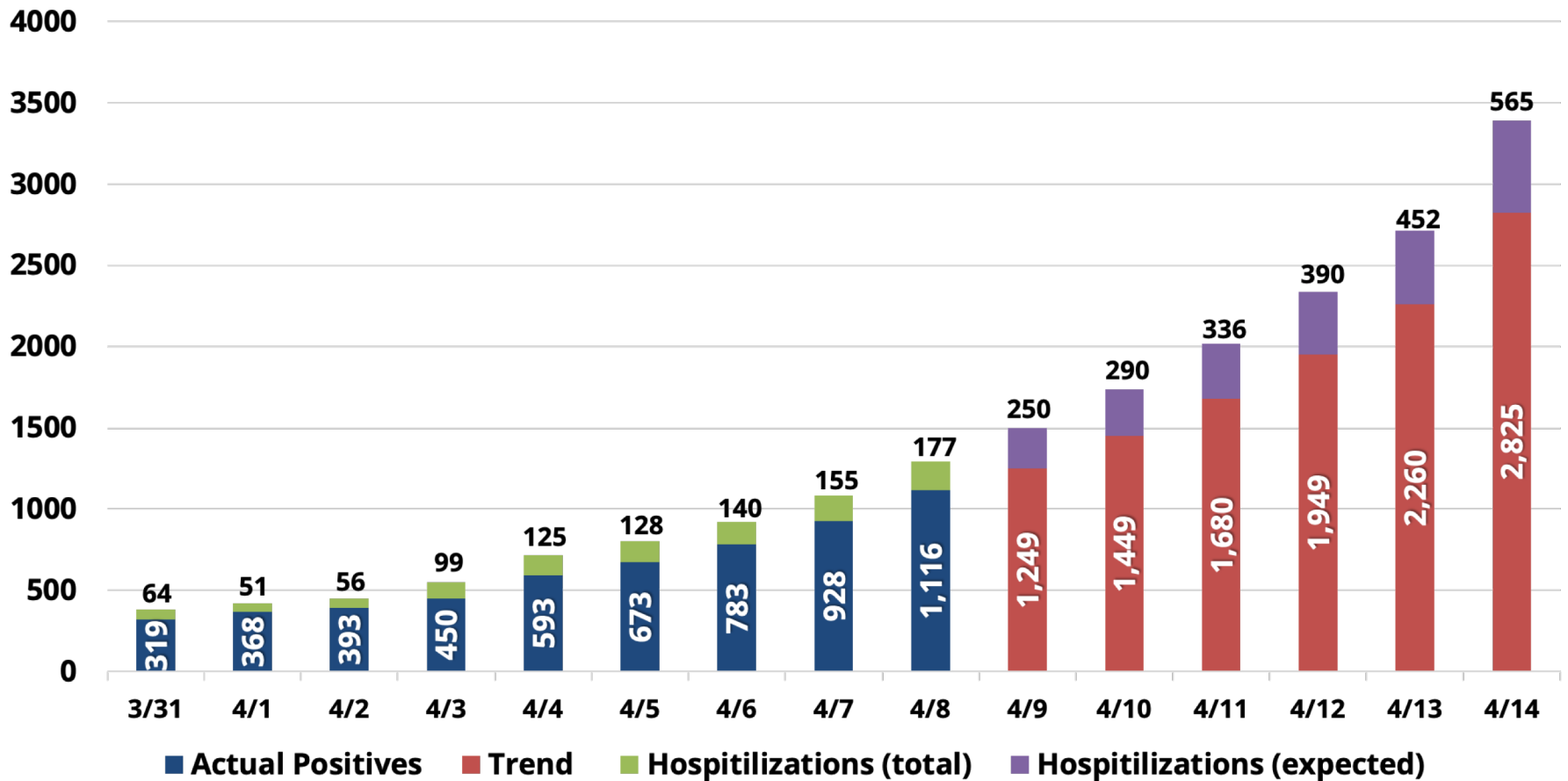


As of April 8, 2020 at 4:30 p.m.

de.gov/coronavirus

Projections

Delaware as of 4/8/2020



Timeline of Delaware's Response



MARCH 11

First confirmed positive case of COVID-19



MARCH 12

State of Emergency Declaration



MARCH 16

Closed restaurants and bars



March 21

Closed Delaware beaches



MARCH 22

Stay-At-Home Order



MARCH 23

Schools closed until May 15



MARCH 29

Out-of-state travelers to self-quarantine for 14 days



APRIL 1

Additional business restrictions



APRIL 2

Community Call-to-Action for supplies and materials



APRIL 6

Banned short-term rentals

"Stay safe. Stay home. All restrictions are intended to flatten the curve and preserve hospital capacity."

-Governor John Carney

Public Health Response

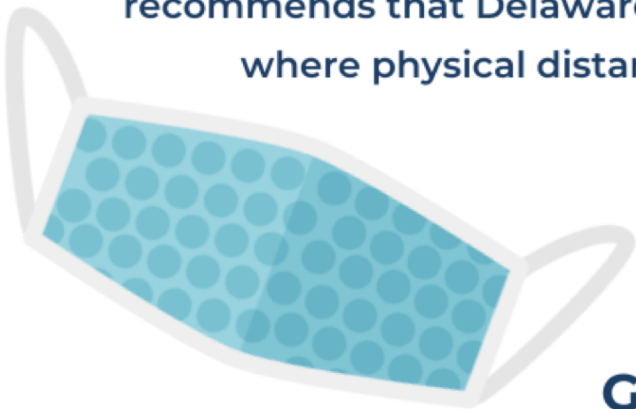
Dr. Karyl Rattay

Director of the Delaware Division of Public Health

Cloth Face Covering Guidance

WHERE SHOULD I WEAR A FACE COVERING?

Consistent with CDC guidance, the Delaware Division of Public Health recommends that Delawareans wear cloth face coverings in public settings where physical distancing is difficult to maintain. This includes:



Grocery Stores



Pharmacies

Public Health Response

Dr. Karyl Rattay

Director of the Delaware Division of Public Health

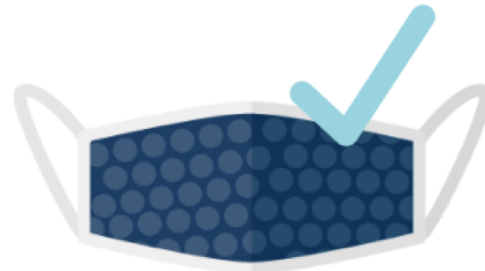
Cloth Face Covering Guidance

SHOULD I WEAR A MASK? WEAR A FACE COVERING.

Delawareans should wear cloth face coverings, not medical or surgical masks that should be reserved for health care workers.



Reserve Medical or Surgical masks for health care workers.



Use cloth face coverings. Reuse as needed, but wash at least once a day.

Public Health Response

Dr. Karyl Rattay

Director of the Delaware Division of Public Health

Cloth Face Covering Guidance

**YOU CAN REUSE YOUR CLOTH FACE COVERING.
WASH AFTER EACH USE OR AT LEAST ONCE A DAY.**

Washing your cloth face covering frequently, ideally after each use, or at least daily is strongly recommended.



**WASH
1X
A DAY**



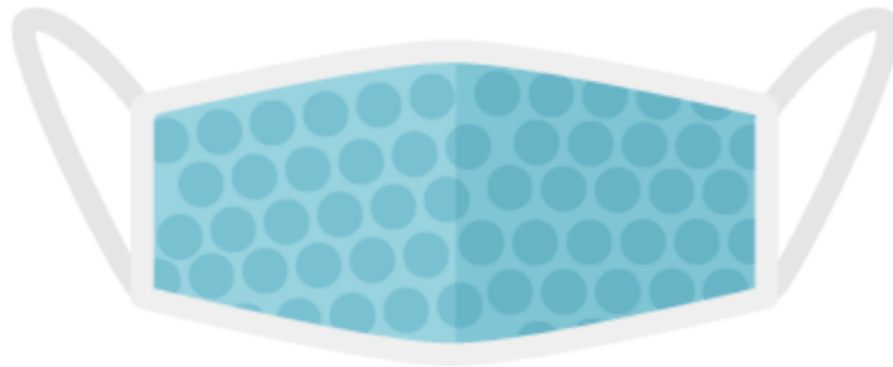
Public Health Response

Dr. Karyl Rattay

Director of the Delaware Division of Public Health

Cloth Face Covering Guidance

**THE PRIMARY PURPOSE OF WEARING A FACE
COVERING IS NOT TO PROTECT YOURSELF –
IT'S TO PROTECT OTHERS.**



Public Health Response

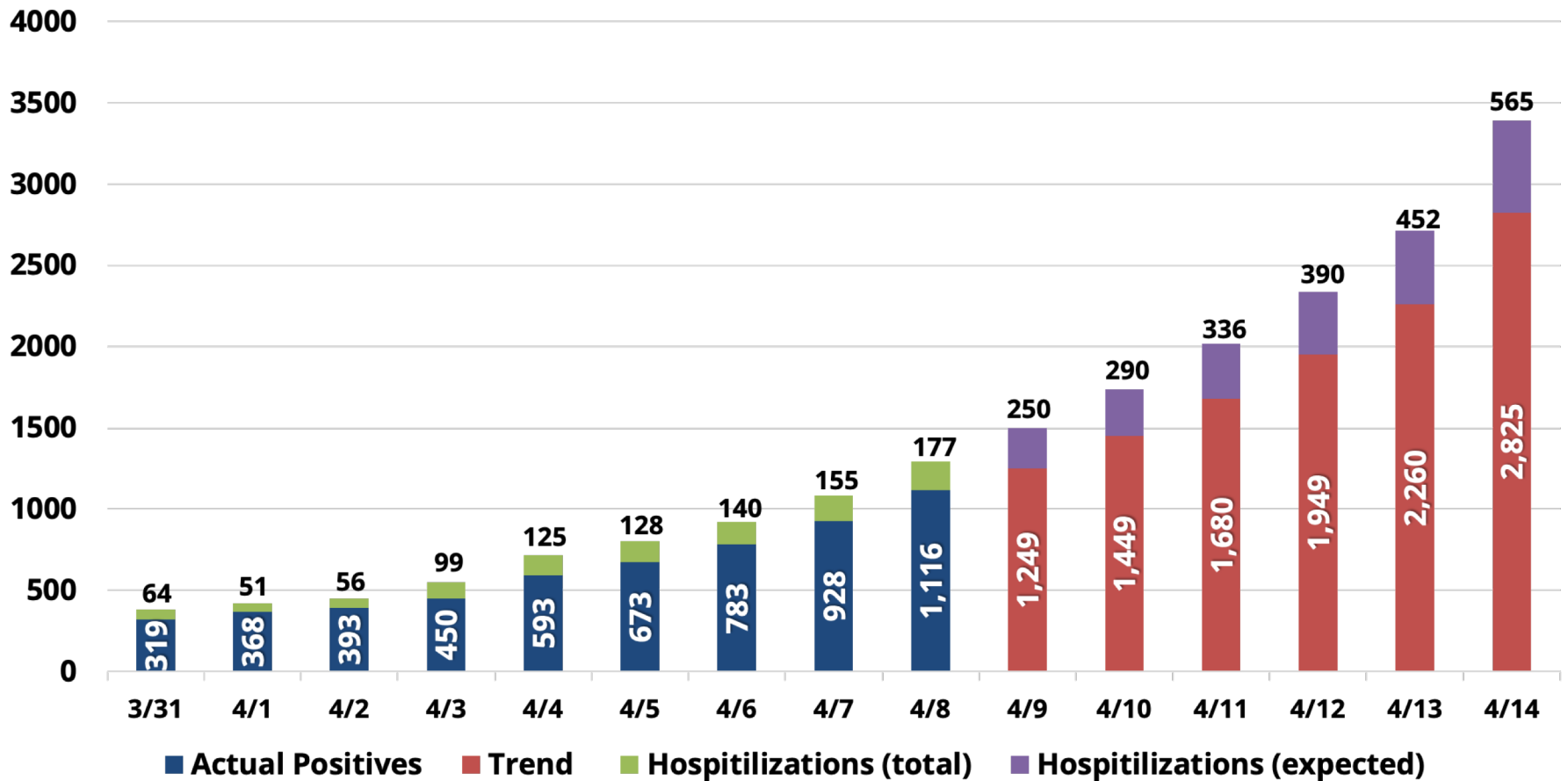
Dr. Karyl Rattay

Director of the Delaware Division of Public Health

- Delaware Psychiatric Center Cases
- DPH Lab Test Results:
 - Total samples tested: 1,670
 - Total Positives: 254
 - Total Negatives: 1416

Projections

Delaware as of 4/8/2020



Preparation & Partnership

AJ Schall

Director of the Delaware Emergency Management Agency

Preparing for Surge:

Delaware
National Guard &
Nemours/
Alfred I. duPont
Hospital for
Children




Preparation & Partnership

AJ Schall


Director of the Delaware Delaware Emergency Management Agency


**CORONAVIRUS
(COVID-19)**


DELAWARE HEALTH
AND SOCIAL SERVICES
Division of Public Health

Questions about coronavirus in **DE?**

CONTACT US.



 **DPHcall@delaware.gov**

Hours of Operation
M-F 8 a.m. to 9 p.m.
Sat-Sun 8 a.m. to 5 p.m.

People with hearing impairments
can dial **7-1-1**

Community Highlight:



de.gov/coronavirus

Preparation & Partnership

AJ Schall

Director of the Delaware Delaware Emergency Management Agency



Community Highlight:



Preparation & Partnership

AJ Schall

Director of the Delaware Delaware Emergency Management Agency

DCF Delaware Community Foundation™
Engaging Communities, Empowering Giving™

 **Philanthropy Delaware**
ADVANCE • CONNECT • IMPACT

United Way 
United Way of Delaware

DANA  LEADING THE SECTOR FORWARD
Delaware Alliance for Nonprofit Advancement

**Your community needs your help.
Give today!**

Delaware COVID-19 Emergency Response Initiative

Community Highlight:

**\$350,000 awarded
to 11 nonprofit
organizations**

Preparation & Partnership

AJ Schall

Director of the Delaware Delaware Emergency Management Agency



**Supporting
Delaware's
Health Care
Workers**

Community Call-to-Action



I can help.



I need help.

VISIT
de.gov/coronavirus
and fill out the form



We're in this together.

- Stay home.
- Practice basic hygiene.
- Protect your neighbors.
- Save lives.

For the latest updates:

de.gov/coronavirus

The background of the slide features a large, faint, circular seal of the State of Delaware. The seal contains the text "SEAL OF THE STATE OF DELAWARE" around the top and "1704 • 1776 • 1787" around the bottom. In the center of the seal is a shield with a ship, flanked by two figures, and a banner below with the words "LIBERTY AND INDEPENDENCE".

Questions

de.gov/coronavirus