



DELAWARE'S RESPONSE TO COVID-19

Press Briefing
April 24, 2020

de.gov/coronavirus

Delaware Cases of COVID-19

3,442 positive cases

since first case confirmed on March 11, 2020

100 total deaths

703 total recoveries

277 current hospitalizations

As of April 23, 2020 at 6:00 p.m.

de.gov/coronavirus

Delaware Cases of COVID-19



**NEW
CASTLE**

1,486

positive cases

*since first case confirmed on
March 11, 2020*

As of April 23, 2020 at 6:00 p.m.

de.gov/coronavirus

Delaware Cases of COVID-19



558
positive cases
*since first case confirmed on
March 11, 2020*

As of April 23, 2020 at 6:00 p.m.

de.gov/coronavirus

Delaware Cases of COVID-19



1,394
positive cases
*since first case confirmed on
March 11, 2020*

As of April 23, 2020 at 6:00 p.m.

de.gov/coronavirus

Delaware Cases of COVID-19



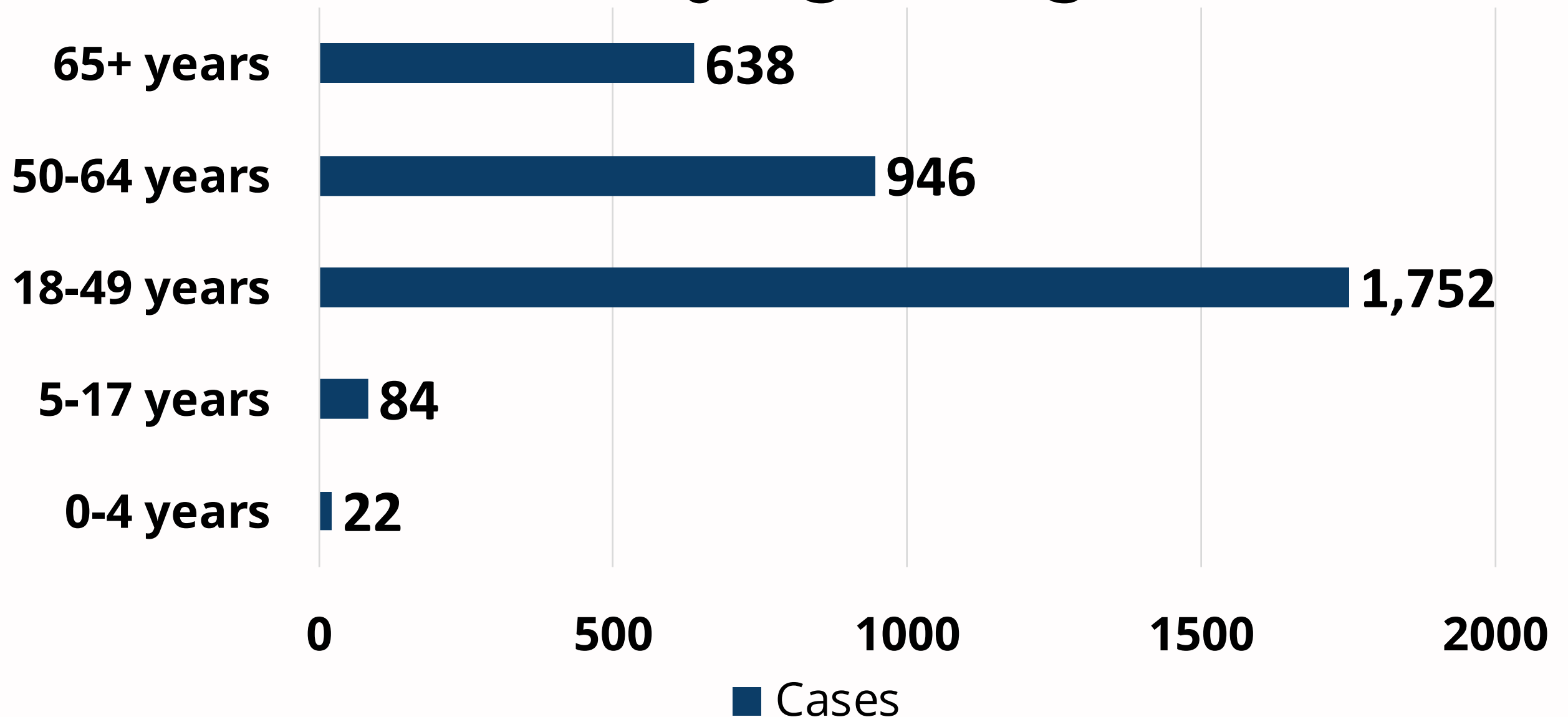
**4 unknown
positive cases**
*since first case confirmed on
March 11, 2020*

As of April 23, 2020 at 6:00 p.m.

de.gov/coronavirus

Delaware Cases of COVID-19

Cases by Age Range



As of April 23, 2020 at 6:00 p.m.

de.gov/coronavirus

Timeline of Delaware's Response



MARCH 11

First confirmed positive case of COVID-19



MARCH 12

State of Emergency Declaration



MARCH 16

Closed restaurants and bars



March 21

Closed Delaware beaches



MARCH 22

Stay-At-Home Order



MARCH 23

Schools closed until May 15



MARCH 29

Out-of-state travelers to self-quarantine for 14 days



APRIL 1

Additional business restrictions



APRIL 2

Community Call-to-Action for supplies and materials



APRIL 6

Banned short-term and commercial rentals



APRIL 15

Stricter measures in long-term care facilities



APRIL 23

Removed restrictions on out-of-state health care workers

"Stay safe. Stay home. All restrictions are intended to flatten the curve and preserve hospital capacity."

-Governor John Carney

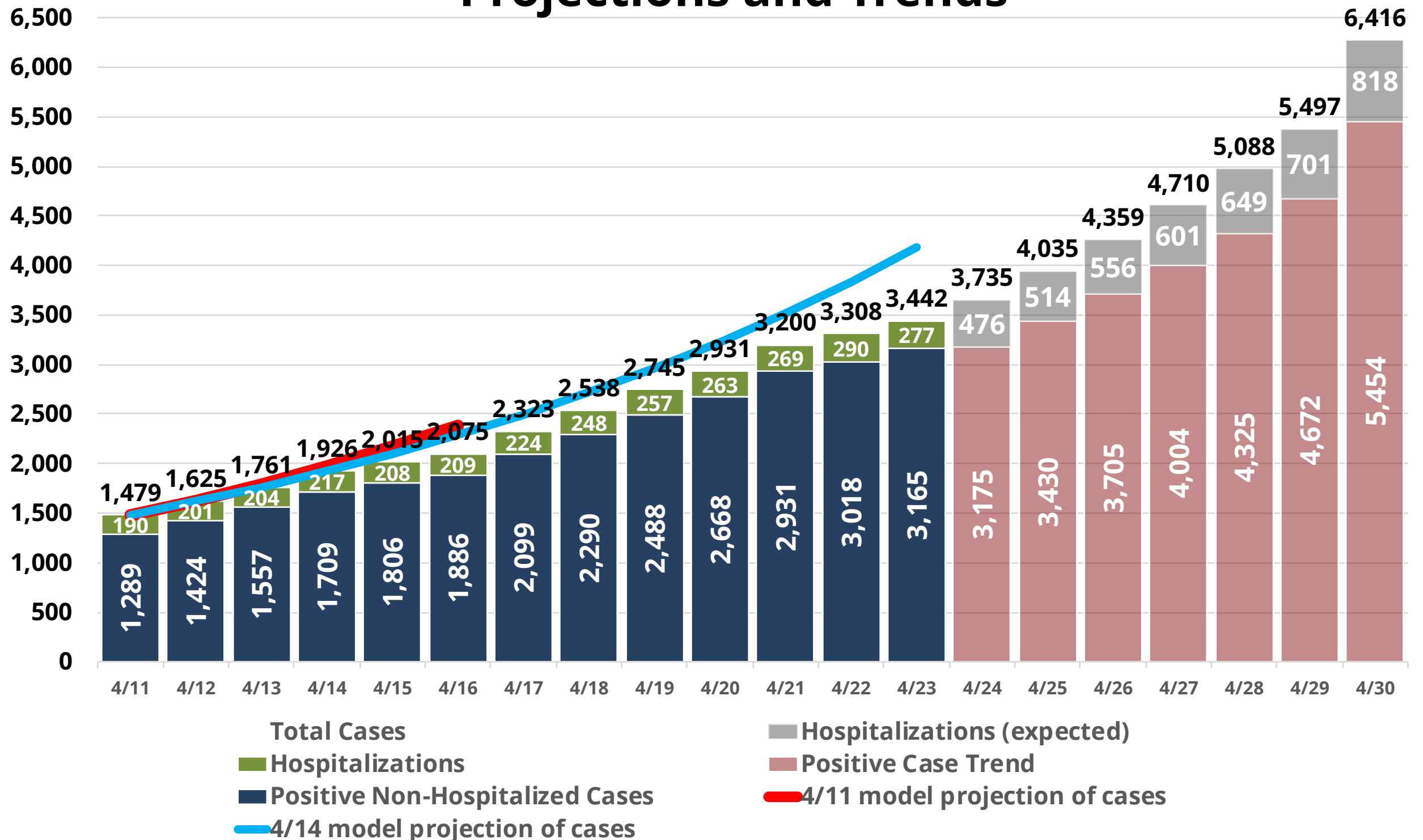
Education Announcement

**Schools will remain closed
for students through end
of this school year**

- **LEAs expected to finish the last two months or so with remote learning.**
- **No replacement for in person instruction, relationships, wraparound services, but health and safety of students and staff is top priority.**

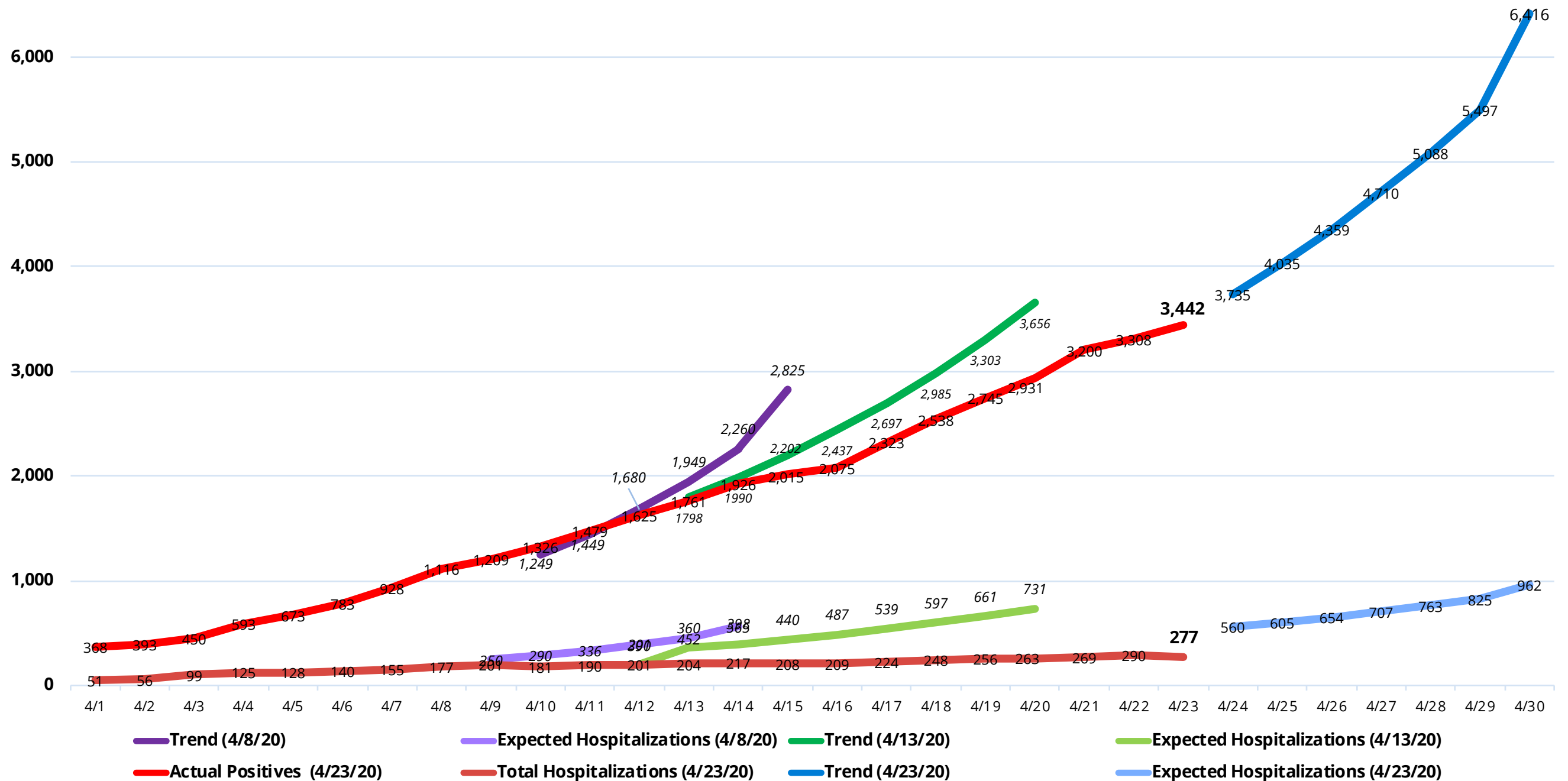
Projections

Projections and Trends



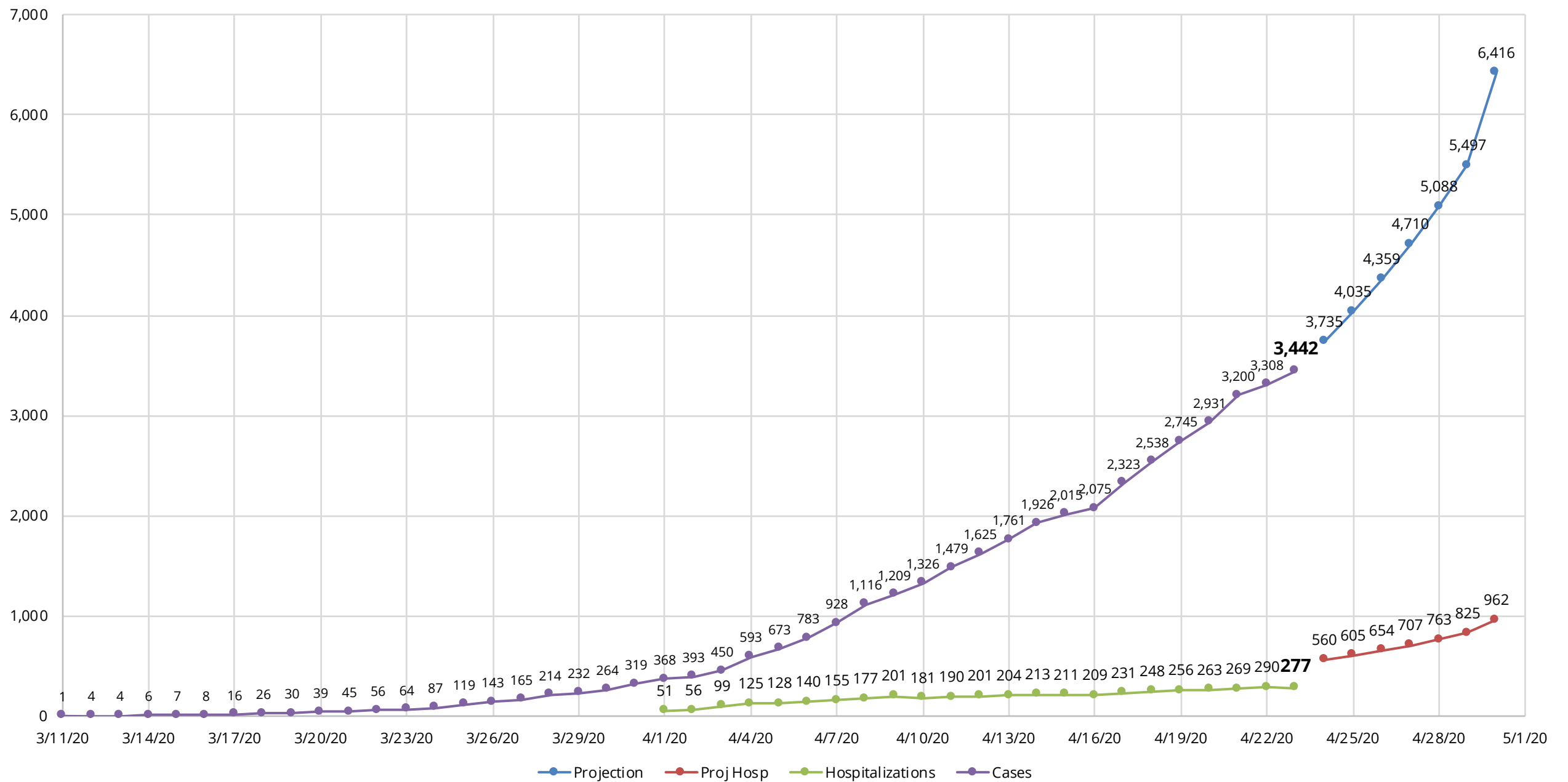
Projections

Trends and Actual - Cases and Hospitalizations 4/8/20, 4/13/20, and 4/23/20



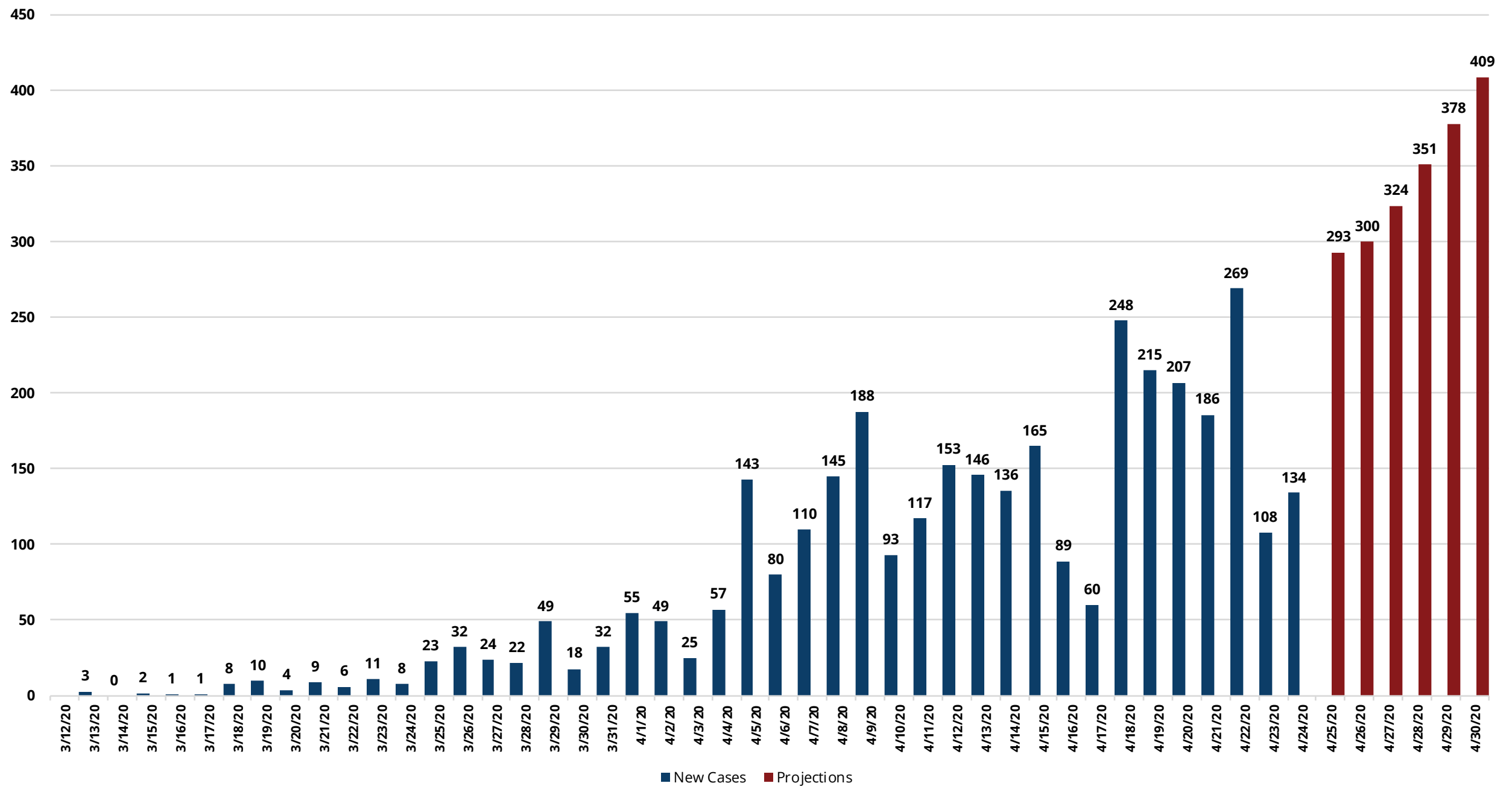
Projections

Cases & Projections



Projections

Cases by Day





Dr. Kara Odom Walker

**Secretary
Delaware Department of Health
and Social Services**

de.gov/coronavirus

My Healthy Community Data



Delaware.gov

Agencies

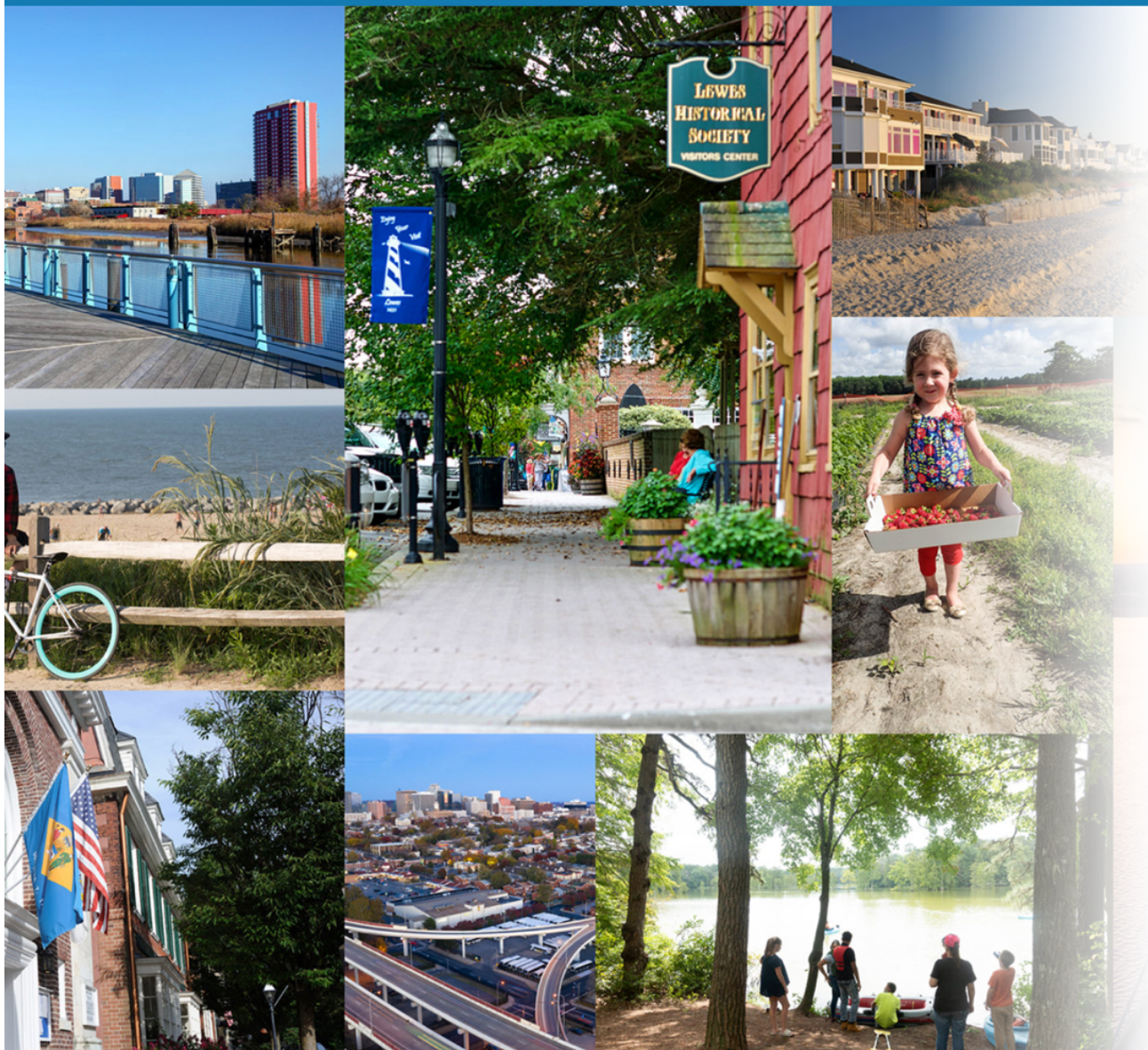
News

Topics

Contact

My Healthy Community

Delaware Environmental Public Health Tracking Network



My Healthy Community

My Healthy Community provides community-level statistics and data that can be used to understand and explore health and related factors that influence health. Our health and the environment in which we live are inherently connected. Together, communities can use data to inform place-based approaches, support and facilitate data-informed discussions that describe and define population health priorities, and leverage data to transform communities by educating them about their community's health and the environment in which they live.

Start your search here for data about your community.

Topics include substance use disorder, air quality, asthma, and drinking water. Additional topics are [coming soon!](#)

Find your local reports

Go

Want to see state-wide reports?

[View State-Wide Reports](#)



Delaware Health and
Social Services

[About](#)

[What's Coming](#)

[Feedback](#)

[Admin](#)



Community Testing & Outreach

Dr. Kara Odom Walker

Secretary of the Delaware Department of Health and Social Services

- **Specific focus on Sussex County**
- **Expansion of free, rapid testing**
- **Partnership with hospitals, community organizations, and employers**

**“We face a very serious situation in Sussex.
This fight is far from over.”**

-Governor John Carney

de.gov/coronavirus

Public Health Response

Dr. Kara Odom Walker

Secretary of the Delaware Department of Health and Social Services

Testing

- **Total State Lab Tests – 2,783**
 - Total Positive Results – 669
 - Total Negative Results – 2,114
- **Total Hospital Tests – 19,594**

As of April 23, 2020 at 6:00 p.m.

de.gov/coronavirus



AJ Schall

Director
Delaware Emergency Management Agency

de.gov/coronavirus

Supplies for Essential Work

AJ Schall

Director of the Delaware Emergency Management Agency

Personal Protective Equipment (PPE)

- **900 orders fulfilled**
- **800,000 pieces of PPE and 650+ gallons of hand sanitizer**
 - *Hospitals*
 - *First Responders*
 - *Nursing Homes*
 - *Medical Facilities*

Delaware National Guard



Medical Missions

de.gov/coronavirus

Delaware National Guard

Care Kits



de.gov/coronavirus

Delaware National Guard



Food Missions

de.gov/coronavirus

Delaware National Guard



Personal Protective Equipment

de.gov/coronavirus

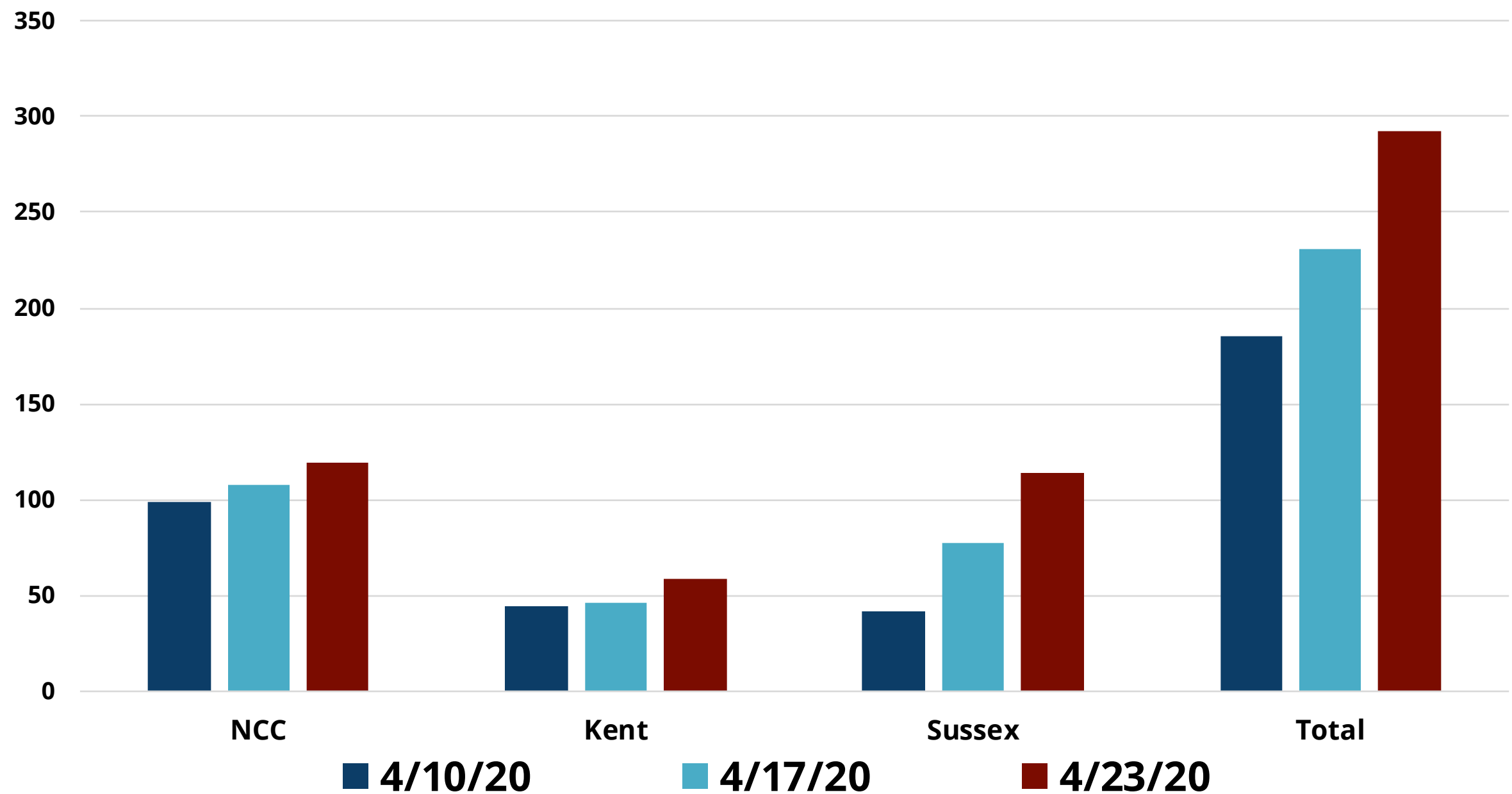
Delaware 2-1-1

Community Stories



Hospitalizations

COVID-19 Hospitalizations





We're in this together.

- Stay home.
- Practice basic hygiene.
- Protect your neighbors.
- Save lives.

For the latest updates:

de.gov/coronavirus



HELP SHAPE DELAWARE'S

ECONOMIC RECOVERY

de.gov/economy

Key factors driving Delaware's reopening decision-making process:

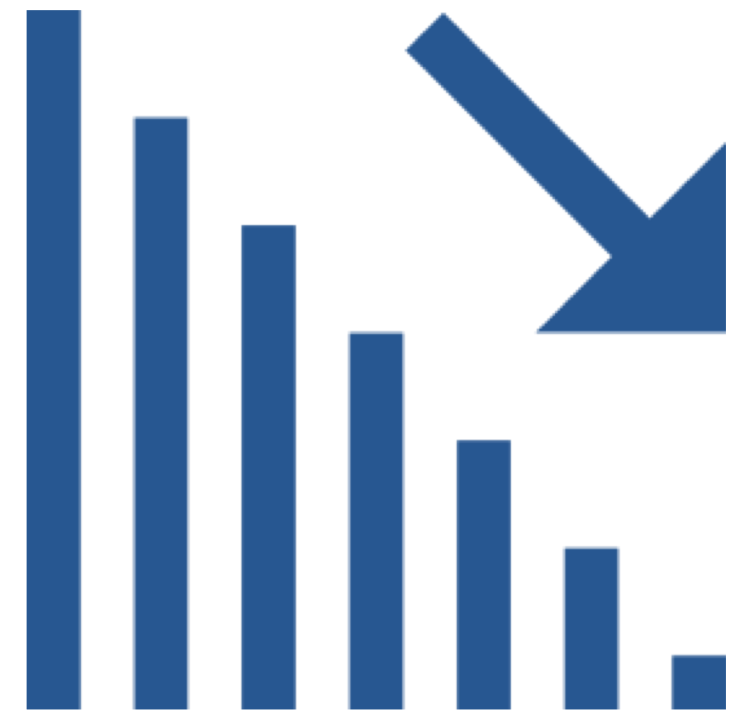
**Whenever possible,
use the CDC
guidance from the
White House Task
Force as a roadmap.**

**That means opening the
economy in phases.**



Key factors driving Delaware's reopening decision-making process:

In order to move to Phase 1, we'll need to see 14 days of our cases going down.



Key factors driving Delaware's reopening decision-making process:

Hire and then train several hundred contact tracers.



When someone gets sick, we need to quickly notify everyone they came in contact with and make sure they self-isolate.

Key factors driving Delaware's reopening decision-making process:

Ensuring a reliable source of tests.

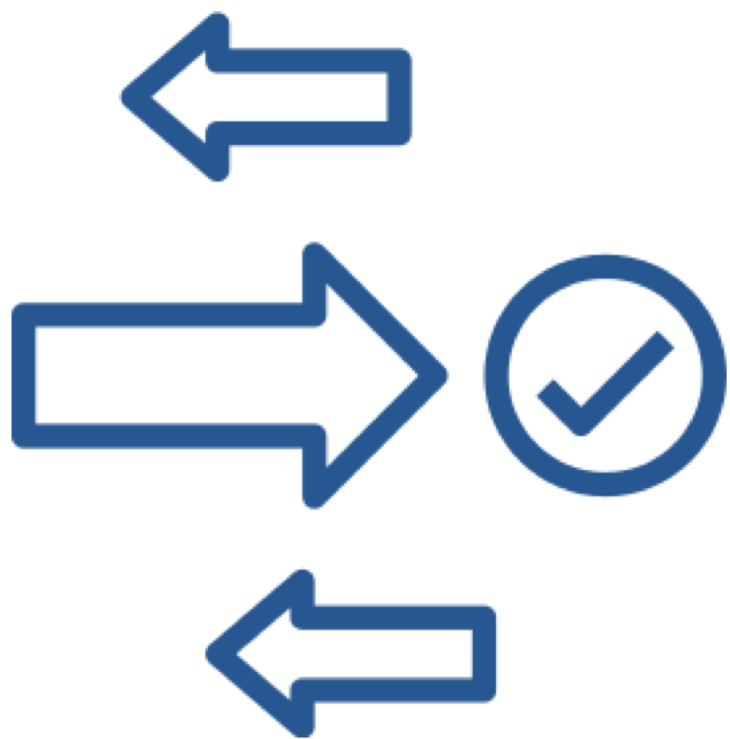
Must have ability to test:

- **Anyone with symptoms**
- **Anyone who has been exposed**
- **Anyone in vulnerable communities like Long-Term Care facilities and people with underlying health conditions.**



Key factors driving Delaware's reopening decision-making process:

Things will be different.



- Every business that opens will have to follow strict social distancing guidelines.
- Might mean that they can't operate at full capacity, or that their staff will need to wear masks.
- We're working out the details now.